



Caledon
Parent-Child
Centre

Strengthening families
for a brighter tomorrow.

2017-2018 Annual Report

Contents

3	A Message of Thanks <i>Chair & Executive Director Message</i>
4	Vision, Mission & Values
5	CPCC Strategic Priorities <i>Overview</i>
6	2017-2018 Facts & Figures <i>An Organizational Snapshot</i>
7	Nurturing a Team of Leaders <i>Human Resources</i>
8	Growing A Strong Community <i>Programming</i>
9	Impact In Our Community <i>Key Indicators</i>
10	Partnering to Provide Integrated Support <i>Stakeholders</i>
11	Our Families Speak <i>Testimonials</i>
12	Funders and Donors <i>Financial Supporters</i>
14	Financial Summary
15	Board of Directors <i>Governance</i>

Printing Donated by



A Message of Thanks

We are proud to share highlights of our strategic achievements and key performance indicators in our 2017/2018 Annual Report. We have always believed that the parent-child relationship is at the heart of healthy child development and strong communities. Our report illustrates the impact of our services that create positive outcomes for families and children in the most influential years of life.

November 27, 2017 marked 30 years of growing families in Caledon. On that day, we honoured the community champions who first mobilized a plan to realize the Caledon Parent-Child Centre's (CPCC) early vision as a Family Resource Centre – and all those who followed. In the months leading up to our 30th Anniversary, we invited families who have used our Centre to tell us how we've made a difference in their lives. Here is what they told us.

If I had to describe the CPCC in one word, I would say:

Learning  **Friendship**  **Fun**  **Welcoming**  **Joy**  **Socialization**
Supportive  **Inclusive**  **Connections**  **Community**  **Belonging**

It's said that the true meaning of life is to plant trees whose shade you'll never know. A seed planted in 1987 that began as a toy lending library and drop-in centre has flourished. 30 years later, operating more than 40 hours per week in 8 locations throughout Caledon, our services and programs have continued to grow in response to need, providing expansive support and nurturing for our community.



Across all sectors, system transformations are occurring, including the Early Years and Child Care sector. In January 2018, Ministry-funded child and family programs integrated into a single, cohesive system under the EarlyON Child and Family Centre brand. In Peel, responsibility for the oversight of EarlyON Centres transferred to the Region of Peel as part of its service system manager role. Over the past year, CPCC was actively involved in Peel's integrated planning approach to transition the system, together with the Region of Peel and other partners. We believe that our unique understanding of Caledon, and knowledge and experience in family support and early learning help to strengthen the holistic needs of families in our community. We look forward to continued collaboration and engagement as the Region works to fully implement Peel's service system plan over the next five years.

Throughout our history and evolution, we focused efforts on expanding our high quality and inclusive programs and services including EarlyON child and family programs, Mobile Rural Outreach Services, Community Action Programs for Children and Special Needs family support.

In early 2018, we entered a new strategic planning cycle. To provide context for our new plan going forward, we consulted with our families and community partners to learn how we can continue to learn and grow in these changing times. Our new plan will provide a compass for the future and set out strategic priorities to better respond to needs of our growing and changing community. We look forward to sharing our 2019 - 2022 Strategic Plan in Fall 2018.

We would like to express our sincere appreciation to our funders and donors, community partners, and our wonderful team – Board members, staff and volunteers – past and present – for three decades of supporting families and nurturing generations of children.

A handwritten signature in blue ink, reading "Heather Baker".

Heather Baker
Chair, Board of Directors

A handwritten signature in blue ink, reading "Teresa Colasanti".

Teresa Colasanti
Executive Director

Vision

To be a leading member of an integrated system of community services that fosters the healthy development of children and families, resulting in a strong and socially responsive community.

Mission

To provide support, resources and education that strengthen families and promote the optimal development of children.

Values

Collaboration - We believe in the strength of partnerships that increase community capacity and accessibility to local health care and social services.

Inclusion - We operate in the spirit of inclusion and tolerance whereby all individuals feel valued and accepted.

Accountability - We are guided by integrity and fiscal responsibility and strive to be effective and responsive to the needs of our community.

Lifelong Learning - We value education and recognize the power of lifelong learning and empowerment as the foundations of a strong community.

Nurturing Environment - We provide a safe and supportive environment that fosters a sense of trust and mutual respect where individuals feel connected to one another and their community.



CPCC Strategic Priorities

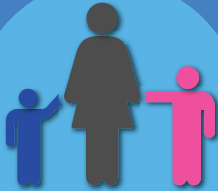


FINANCIAL

CPCC will increase and diversify sustainable funding.

Achievements:

- Increased Fund Development income by 15%, including government grants.
- Secured in-kind and financial grants for rural program facility rentals.
- Secured capital improvement funds for Bolton Main Site playroom reconfiguration.



PROGRAMMING

CPCC will evaluate and enhance programming.

Achievements:

- Increased parental knowledge and developmental outcomes on infant mental health and well-being.
- Introduced physical literacy activities that promote healthy weights and active living.
- Implemented a cultural and linguistic competency tool to identify gaps and inform program planning.



ORGANIZATIONAL

CPCC will plan for and build human resource capacity.

Achievements:

- Developed and initiated implementation of an Employee Service Recognition program to celebrate service milestones.
- Achieved certification in the third phase of "Raising the Bar in Peel," a quality initiative that guides programming in the early years.

CPCC will adapt and evolve facilities and operations.

Achievements:

- Created a dedicated preschool learning area that supports the Four Foundations of Learning (Belonging, Well-Being, Engagement and Expression).



STAKEHOLDERS

CPCC will increase community profile and connections.

Achievements:

- Increased community development efforts and information gathering in rural areas.
- Enhanced electronic media presence through adopting mobile platforms and video capabilities.
- Engaged corporate volunteer teams in ongoing program and event activities.

An Organizational Snapshot

2017-2018 Facts & Figures

The CPCC plays an indispensable role in the lives of Caledon families. We put our mission into action through a continuum of quality, results-based early years programs and services which nurture positive family relationships and healthy child development in the most influential years of life.



**# of Years
Providing
Services**



4,376
**# of Children &
Parents/Caregivers
who accessed services**



69
**# of Early
Learning
Programs**

8



of Agency Locations



16,114
of Child Visits



37
**# of Parent
Workshops**



358
**# of New
Families Registered**



11,861
**# of Parent/Caregiver
Visits**



279
**# of Referrals to other
Early Years Services**



Family Resource Program

A long-standing member of the Canadian Association of Family Resource Programs, CPCC provides programs guided by the principles of family support that focus on building supportive relationships, facilitating growth, respecting diversity and furthering community development.



EarlyON Child & Family Centre

EarlyON Child and Family Centres enhance children's learning and development, provide support to parents and caregivers and connect families to community services. We are proud to celebrate over 14 years as an early years service provider, now under the EarlyON brand.



Community Action Program for Children (CAP-C)

The Growing Together in Peel project encourages the well-being of vulnerable children and their families facing conditions of risk. Families are supported through education, emotional support, nutrition information and food security.

Human Resources

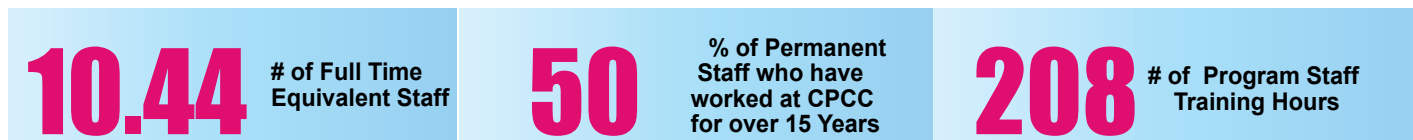
Nurturing a Team of Leaders

We are proud to once again share our achievement of the 2017 adaptation of "Raising the Bar" (RTB) in Peel. Our dedicated program staff engage in reflection, learning and growth to ensure high quality early learning programs and services.

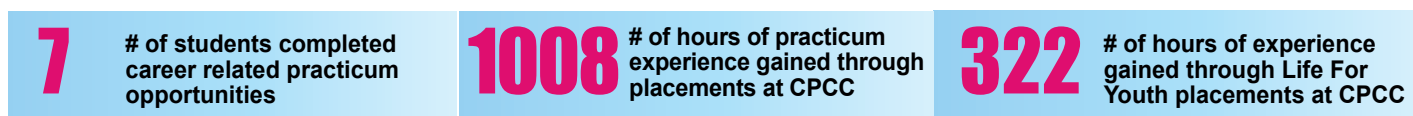
Raising the Bar provides a platform to increase a program's capacity to enrich their practices based on the following foundations:

- Lifelong Learning • Reflective Educators • Mentorship • Leadership • Collaborative Inquiry •

Staff:



Placement Students:



2017/2018 Length of Service Milestones



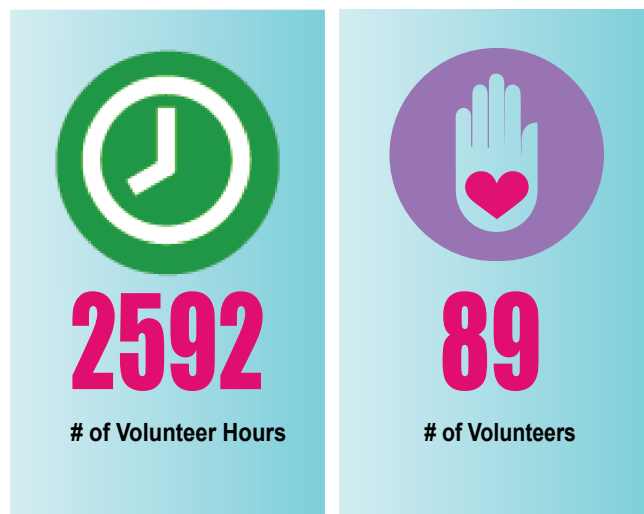
Celebrating 30 Years of Excellence

Congratulations to our Program Manager, Ailsa Stanners- Moroz, for 30 years of service. Ailsa has been a strong and steady influence who has helped to shape the organization. Over the years, we have watched her support and guide countless parents, caregivers, and children with great dedication, compassion and humility. Thank you, Ailsa, for 30 years of service excellence, inspiration, leadership and commitment.



Volunteers

Thank you to our 80 plus caring and dedicated volunteers that support our staff and enrich the lives of the families and children we serve each day.



Town of Caledon Volunteer Award Recipients

Two long-time CPCC volunteers were celebrated for their contributions at the Town of Caledon's 2018 Community Recognition night this spring.

Congratulations to Board Chair, Heather Baker (left) and Children's Program Volunteer, Nancy Patafio (right, with Mayor, Allan Thompson), recipients of the 2018 Town of Caledon Volunteer Service Award.



Programming

Growing a Strong Community

At the CPCC, local families find support, programs and resources to help them navigate the complex journey that is parenting. We support families and communities by providing responsive pre- and postnatal support, early learning and child development programs, parenting enrichment, family health, nutrition and wellness promotion, early identification screening, and access to parenting resource materials and specialized community services.

Our Bolton Main Site provides a full range of inclusive, play-based learning opportunities and parent/caregiver supports to improve the developmental health and well-being of children and families. Early learning programs are guided by the Four Foundations of Learning* and Guiding Principles of Family Support. Families can also access support through on-site consultations, postpartum support groups, special needs family support, information and referrals.

Through our Mobile Rural Outreach Program, the CPCC supports families and connects communities in Caledon's rural villages. Toys, resources, program supplies and staff are transported, through the use of a modified van, to neighbourhoods and local parks in Caledon where families benefit from connections and can receive services in their own community. As the Caledon population grows, the CPCC supports more and more families new to these villages and rural neighbourhoods.

* [How Does Learning Happen?, Ontario's Pedagogy for the Early Years](#)



Tiffany's Story

Support on Life's Journey

My name is Tiffany and I am the mom to two wonderful boys. If you had told me 5 years ago that walking into the Caledon Parent-Child Centre would impact my life, I might have laughed. I had just moved to the area, I knew no one, and I was just hoping for a place my boys could play; instead... I got a new family.

I was able to attend various infant development and new parent programs with my oldest son who was a baby. As the boys grew, so did our needs. We accessed the "Growing Together In Peel" program, which allowed for a time of learning and connecting, a shared meal and always ended with a storytime. I loved that my boys were learning important life-skills like social competence, a skill that will follow them through life.

But the biggest impact came when my son was diagnosed with Autism Spectrum Disorder. Being in the field, I thought I could handle it, but slowly, I learned I needed a community. Thankfully, I was told about "Let's Get Together," a support program for families parenting children with special needs. Not only did I find somewhere my son was accepted for who he was, but I also found a place of support, guidance and so much love. Knowing that I am not alone has helped us along this journey. My boys have benefitted from all the wonderful connections with Centre staff and volunteers, and I too have grown as a mom, friend and person.

I can honestly say if it was not for this Centre and their continued support, I am not sure where this journey would have taken me. So today, I say thank you to the Centre, staff and many volunteers that have impacted my family's life.



Key Indicators

Impact In Our Community

96

% of participating parents reported an increase in knowledge of child development and positive parenting strategies.

91

% of participating parents met new friends in the community and built a supportive network.

98

% of children participating in early learning programs increased their communication skills.

100

% of parents reported that participation in the "Let's Get Together" parent group helped them manage the journey of parenting a child with special needs.

98

% of children participating in early learning programs built and improved their social skills such as turn-taking, sharing, following directions and cooperative play.

96

% of parents/caregivers attending rural outreach programs reported increased awareness and connection to community support services.

1919

Family Time Drop In hours provided informal opportunities for parents to connect with each other, early years professionals and other community resources. During drop in, children played and learned in an enriching environment.

276

children benefitted from programs which prepare young children for school.

224

grandparents attended the CPCC with their grandchildren.

46

nutritious meals were provided and shared with "Growing Together in Peel" families.

171

people accessed support groups.

31

parents and **43** children were supported through the "Growing Together in Peel" program benefitting families experiencing financial challenges.

87

parents received respite while attending family support programs and workshops.

Stakeholders

Partnering to Provide Integrated Support

The CPCC is a hub where families can access a variety of supports and services that strengthen the family as a whole and assist them in the critical role of raising young children. We are pleased to continue to increase the number of partnerships with agencies and service providers to better support Caledon families in their own community.

19

of Partnerships
with other Agencies

100

of people who
accessed Onsite
Consultations

279

of Referrals to
other Early Years
Services

428

pounds of food donated
by The Exchange to
CPCC family support
programs

489

of Parents/Caregivers
and Children who made
connections through
outreach events

137

of expectant parents
who attended Peel
Public Health
Prenatal Classes at
CPCC

15

of Caledon Families who were
assisted with tax filing and
access to benefit entitlements

6

of partnerships with post-secondary
institutions that provided practicum
placements at CPCC



Testimonials

Our Families Speak



"The CPCC is very welcoming. I love seeing everyone - from staff to students to volunteers - interact with the families, caregivers and children who attend the Centre. You need very special people to make this work. I can tell you the CPCC know - and love - what they are doing.

A CPCC Grandparent



"The commitment of the CPCC to the family, not just the child's development, shows a deeper sense of community. Programs offered encourage positive transitions to the school system, social independence and community integration, which assist parents to ensure that their child receives the best possible foundation for success."

A CPCC Rural Parent

"If the CPCC was not here, we would have limited space to meet people, we would feel disconnected and we would have to pay for a drop-in service. We feel a sense of community. We like that everyone knows us and are recognized. Everyone knows us and our child by name. We feel comfort and secure here. We receive help and are part of a non-judgemental, supportive community.



A Growing Together In Peel (CAP-C) Parent

"(The Centre has) helped us navigate life experiences we never expected and couldn't be prepared for."



A "Let's Get Together" Parent

Postpartum Support
Social Supports
 Respite
 Parent Enrichment
 Early Intervention
 Special Needs
 Literacy
Family
 Resources
 Play-Based Learning
 School Readiness
 Child Development
 Mental Health
Community Connections
 Bonding & Attachment
 Health & Well-Being
 Information & Referrals

Financial Supporters

Funders and Donors

The CPCC would like to acknowledge the financial contributions of our funding partners and donors. Your support enables our work and is an investment in the healthy development of Caledon families.

FUNDING PARTNERS

Region of Peel
Ministry of Education
United Way of Peel Region
Health & Welfare Canada

Human Resources and Skills Development Canada
Ministry of Children & Youth Services
Town of Caledon
Fundraising & Donations

FINANCIAL DONORS

Thank you to the following businesses, service clubs, foundations and individuals for their financial contributions for programs and events from April 2017 to March 2018.

CORPORATE GIFTS

Bank of Montreal – Bolton Branch
Bill Parnaby, Royal LePage RCR Realty
Canadian Dance Unit
Dr. Andrew Howarth
Egan Funeral Home
Entera Utility Contractors Co. Ltd.
Fines Ford Lincoln Sales & Service Ltd.
Garden Foods Market
Giant Tiger - Bolton

Hour Glass and Mirror Inc.
Investors Group – Caledon
J. G. Lea Marketing
Italian Canadian Savings & Credit Union Ltd.
Popeyes Louisiana Kitchen
Robert B. Somerville Co. Limited
Scotiabank, Bolton Branch
Silcotech North America Inc.

SERVICE CLUBS & FOUNDATIONS

Brampton and Caledon
Community Foundation
Gary Bluestein Charitable
Foundation
Fr. Henk Van Berg Council
Kinsmen Club of Bolton
Rotary Club of Bolton

INDIVIDUAL GIFTS

Melanie Alderfer-Mowat
Mary Ariganello
Lynn Baker
Michelle Baratto
Evan Boless
Yulia Borobkova
John and Anna Colasanti
Teresa Colasanti
Eva Corvese
Kira Dzikushyna
Robert Fines
Julia Fischetti
Ryan French
David Gixti
Sonia Hartsell
Arno Ilic
Maryann Jefferies
Heather Judge
Carol Anne LaRose
Marguerite Lazarus
Susan Lough
Janet MacPhee
Cathy McClure
Jenna McDonald

Holly Monkman
Sarah Parlett
Giuseppe Pascarella
Nancy Patafio
Jigar Patel
Adam Perzia
Kara Quigley
Diana Ramsay
Paula Rosart
Erin Rosart
Rebecca Sandulak
Shelly Sargent
Brenda St. Croix
Leanne Stuttard
Elton Tanduyan
Allan Thompson
Cristina Vescio
Jason Whitfield
Elisa Zomparelli
Carmen Armata - in celebration of Paul Borg's Birthday
Brenda Cassell - in memory of Arthur Morrison
Ailsa Stanners-Moroz - in memory of K. E. Stanners

Special thanks to the following media organizations for their support.

The Caledon Enterprise
The Caledon Citizen
In the Hills
Snapd Caledon

In the spring of 2017, the Kinsmen Club of Bolton made a very generous donation of \$8000 to facilitate the reconfiguration of our open-concept play area to enhance experiential preschool learning. The Bolton Kin Kid's Corner is a dedicated and stimulating space where preschoolers can fully explore age appropriate activities and help them prepare for the early learning environment in school classrooms today.



The Brampton and Caledon Community Foundation presented a cheque for \$2000 to the CPCC in 2017.

Funding enabled the purchase of an accessible desk which also facilitated the reorganization of our reception area.

Investors Group - Caledon made a generous gift of \$1000 to the School Here I Come program. This support will enable the delivery of two additional programs – one at our Bolton site and one in a rural location - providing children the opportunity to build and practice those crucial skills needed for a successful transition into school.



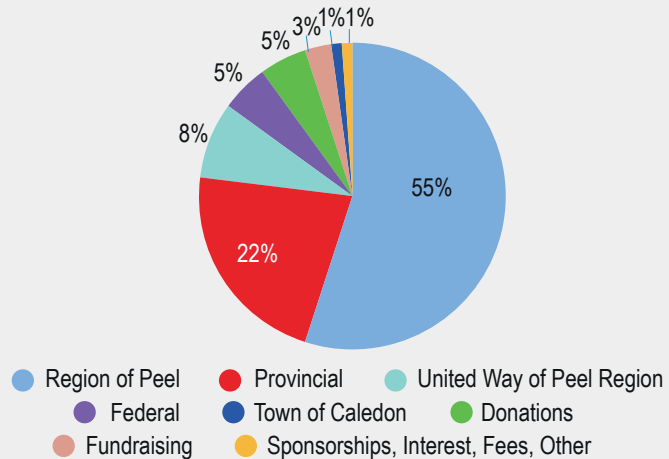
The CPCC would like to take this opportunity to offer our most sincere thanks to all the businesses and service groups who support our Centre year after year.

Financial Summary

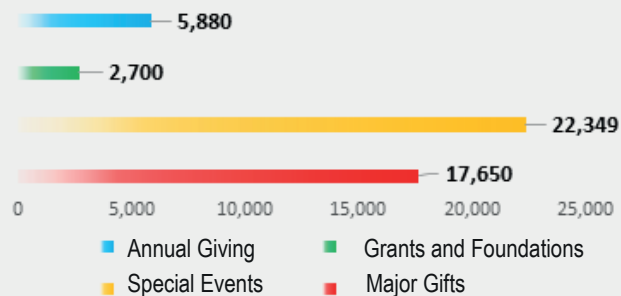
Statement of Operations

	2017/2018	2016/2017
Revenue		
Government Funding	581,394	587,779
Non Government Funding or Revenue from other Funding Sources	57,051	58,653
Donations/Sponsorship/Fundraising	59,123	44,401
Total	697,568	690,833
Expenses		
Salaries	511,581	498,790
Occupancy Expenses	110,223	107,957
Other Operating Expenses	61,100	65,940
Fundraising Expenses	10,544	10,033
Total	693,448	682,720
Excess of Revenue over Expenses	4,120	8,113

Sources of Revenue



2017/2018 Fund Development Revenue Dashboard



ERROR: undefinedresult
OFFENDING COMMAND: itransform

STACK:

2896.1
4009.1